

## Chapter 8: Component and Deployment Diagram

- Component Diagram
  - Introduction
  - Elements of Component Diagram
  - Example of Component Diagram
- Deployment Diagram
  - Introduction
  - Elements of Deployment Diagram
  - Example of Deployment Diagram

1

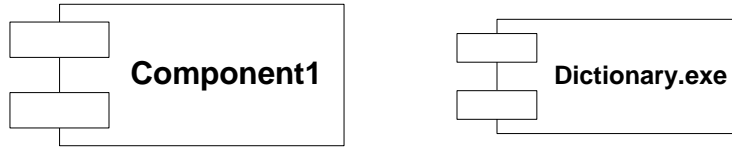
### Component Diagram

- Use Component Diagram to model the physical implementation of the software (file resources).
- Components to use with Component Diagram are:
  - Components that required to run the system (library file, etc.)
  - Source code file, and data file
  - Execution file (.exe)
- We can reach a component's operations through its interface.

2

## Elements of Component Diagram

- Component Icon



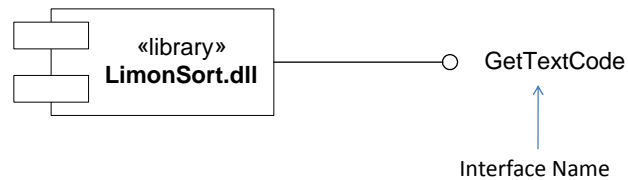
- Component Stereotype

- <<executable>>: executable file (.exe)
- <<library>>: references resources (.dll)
- <<file>>: text file, source code file, etc.
- <<table>>: database file, table file, etc.
- <<document>>: document file, web page file, etc.

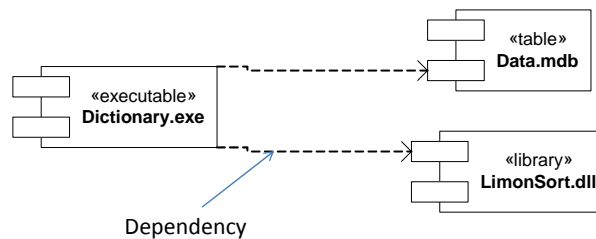
3

## Elements of Component Diagram

- Component Interface



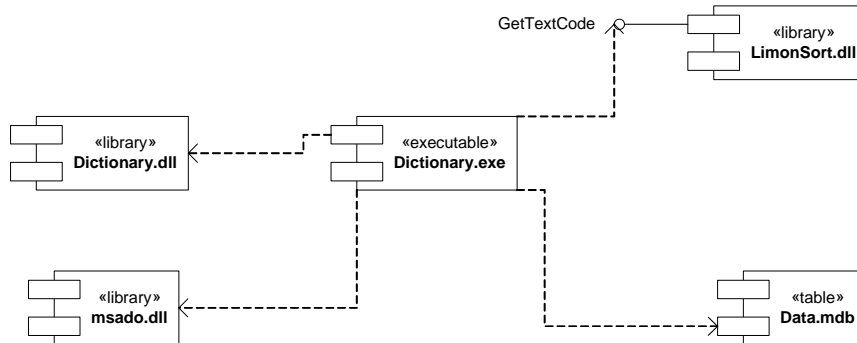
- Component Dependencies



4

## Example of Component Diagram

- Khmer English Dictionary
  - Limon Font, Data Store in MS-Access



5

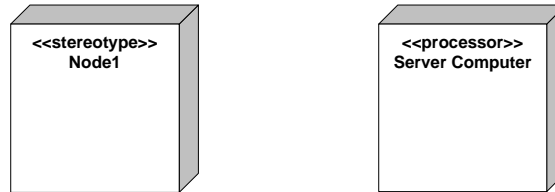
## Deployment Diagram

- Introduction
  - Deployment Diagram describes the physical resources of the system (hardware).
  - The focus of the Deployment Diagram is the nodes on which the software will run.
  - The node can be PC Client, Storage device, Server, etc.
  - Deployment view shows the physical arrangement of run-time computational resources, such as computer and its interconnections.

6

## Elements of Deployment Diagram

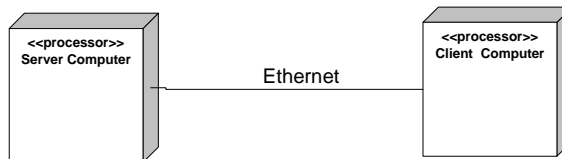
- Node:
  - Computer Client, Computer Server, Switch, Router, Modem, Printer, etc.



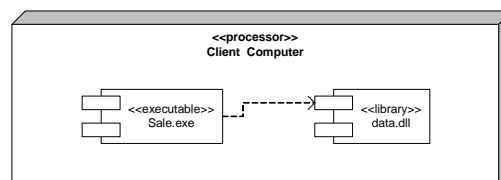
7

## Elements of Deployment Diagram

- Association:
  - Ethernet link, Parallel link, etc.

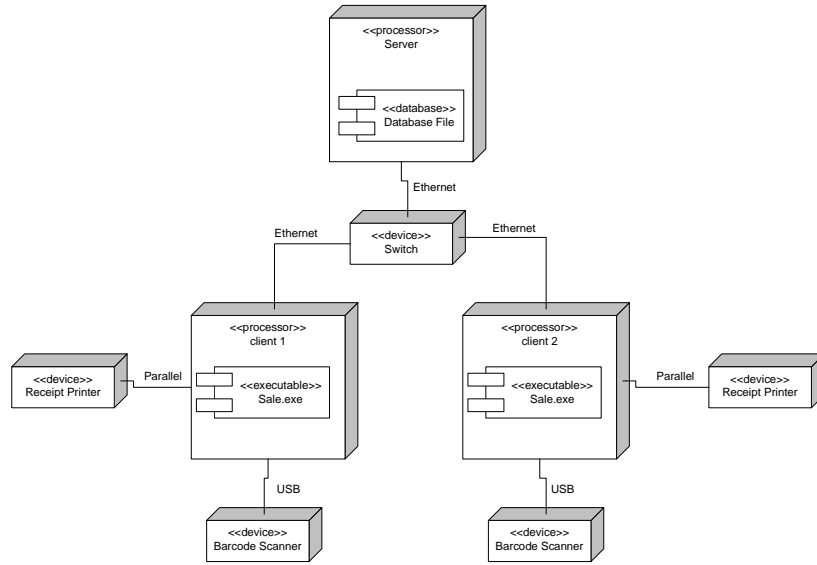


- Component and Nodes



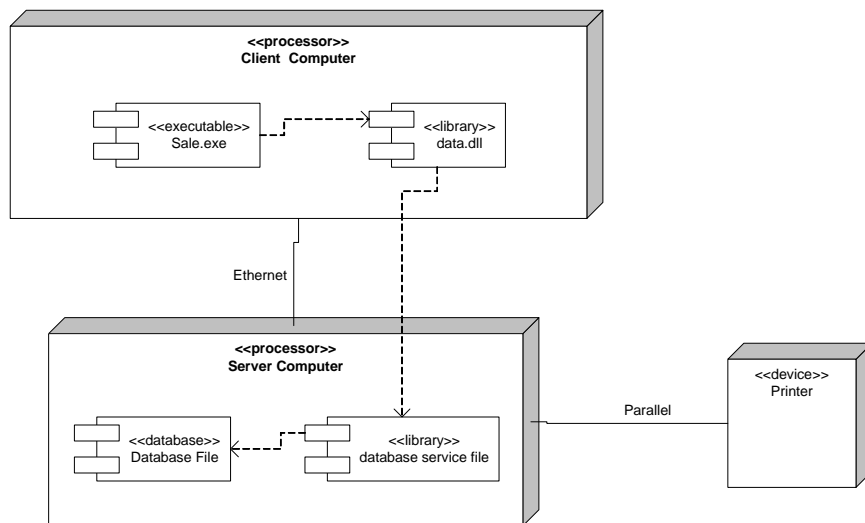
8

## Example of Deployment Diagram



9

## Example of Deployment Diagram



10